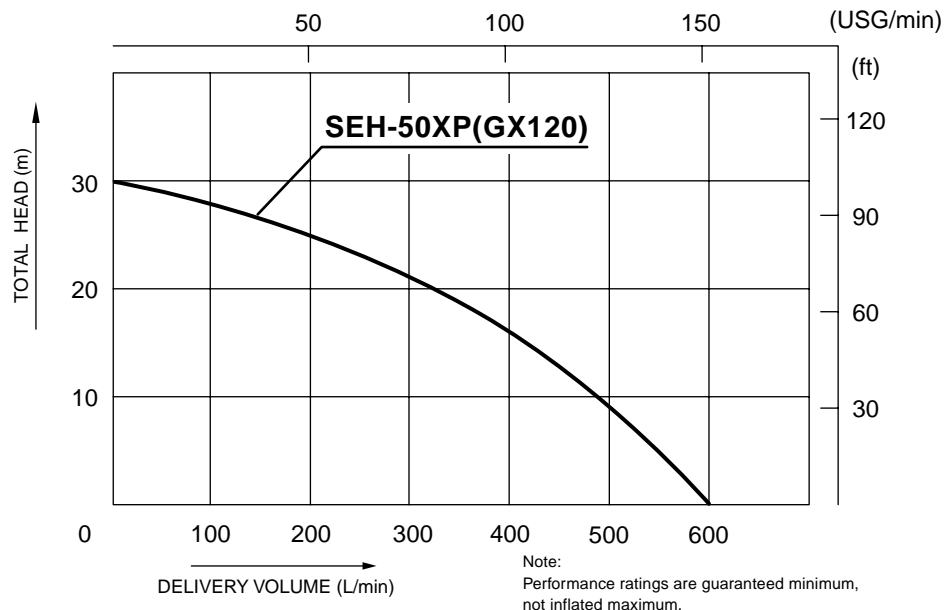


PERFORMANCE CURVE

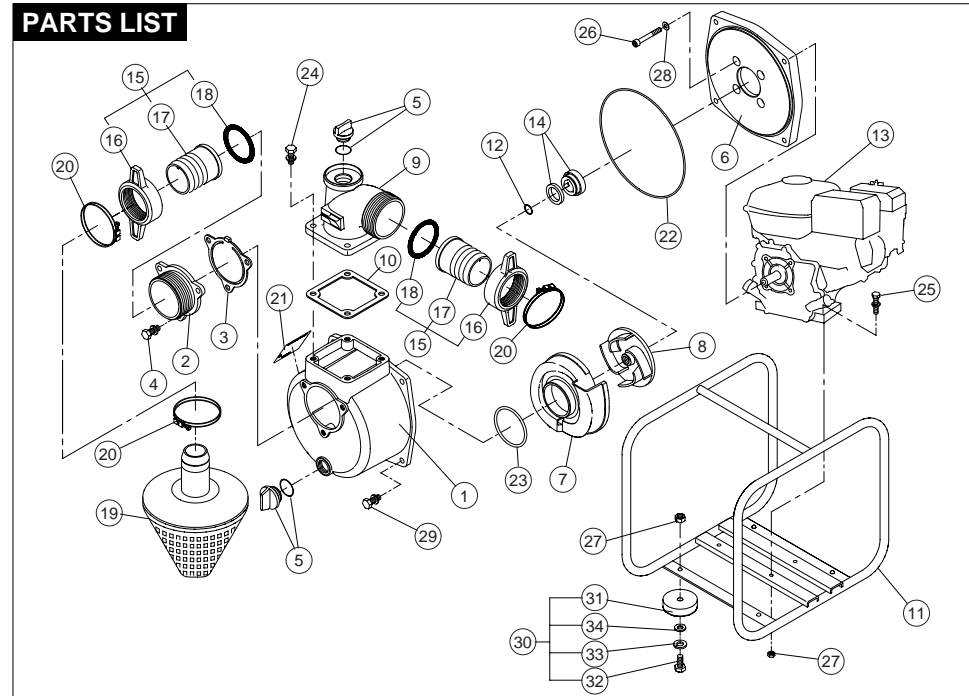


SPECIFICATIONS

Model		SEH-50XP	
PUMP	Connection Dia	50 mm (2")	
	Connection Thread	BSP Thread	
	Total Head	30 m (98 ft)	
	Delivery Volume	600 L/min (158 USG/min)	
	Max. Suction Head	8 m(26ft)	
ENGINE	Model		HONDA GX120 Forced Air-Cooled 4-stroke Gasoline Engine
	Exhaust Volume		118 cc
	Output	Rated Power	2.1kW(2.9PS)/3600rpm
		Max. Power	2.6kW(3.5PS)/4000rpm
	Fuel		Automotive Unleaded Gasoline
	Fuel Tank capacity		2.0 L(0.66gal)
	Continuous Operating Time		Approx. 2.5 hrs(full tank)
	Starting Method		Recoil Starter
	Standard Accessories		1 Strainer, 2 Hose Couplings, 3 Hose Bands, 1 Engine Tool Set
Net Weight		21 kg(46lb)	

For the purpose of improvement, specifications are subject to changes without notice.

PARTS LIST



SEH-50XP (GX120)

No.	PARTS CODE	PARTS NAME	QTY	No.	PARTS CODE	PARTS NAME	QTY
1	0120195	Pump casing	1	23	0112792	O-ring P54	1
2	0112662	Suction flange	1	24	743119047	Bolt M8x25	4
3	0112665	Check valve	1	25	743119051	Bolt M8x35	4
4	743119045	Bolt M8x20	3	26	734532076	Socket bolt M8x60	4
5	0118078	20A Plug set	2	27	827419008	Nut M8	8
6	0114027	Flange bracket	1	28	854255008	Seal washer	4
7	0114640	Volute casing	1	29	743119046	Bolt M8x20	4
8	0115125	Impeller	1	30	0117345	Cushion Rubber set	1
9	0110556	Delivery flange	1	31	0110515	50L Cushion Rubber	4
10	0110541	Flange packing	1	32	735719148	Bolt M8x20	4
11	0117222	Base set	1	33	843822008	Spring Washer	4
12	0110466	Adjusting washer	3	34	846007008	Washer	4
13	—	Engine	1				
14	0114090	Mechanical seal	1				
15	0117026	Coupling set	2				
16	0113390	Coupling	2				
17	0110356	Nipple	2				
18	0113391	Coupling packing	2				
19	0118159	Strainer	1				
20	940019060	Hose band ø60	3				
21	—	Name plate	1				
22	0115014	O-ring 1517-42.5	1				