

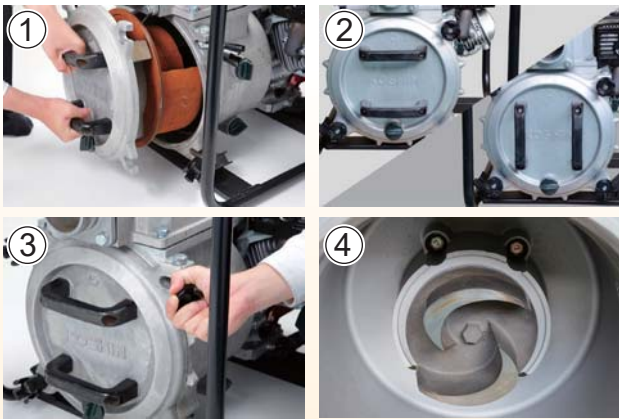
# New Design for Easy Maintenance



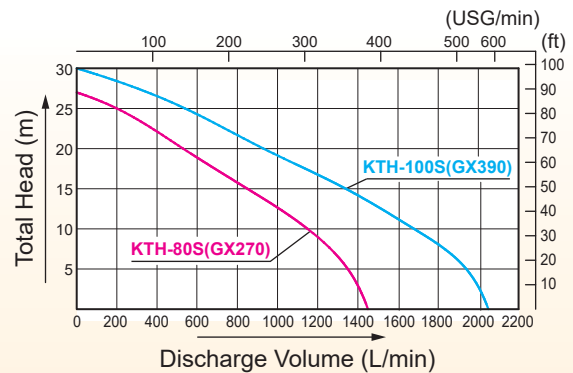
KTH-80S

Powered by Honda GX270 & GX390 with oil alert

- ① The cleanout cover can be removed easily without removing hoses.
- ② Handles on the cleanout cover can be installed in vertical or horizontal position.
- ③ Easy removal of knobs.
- ④ New Impeller design with hexagon boss for easy installation and removal.



■ Performance Curve \*Performance ratings are guaranteed minimum, not inflated maximum.



## ■ Specification

Model	KTH-80S	KTH-100S	
PUMP	Connection Dia	80 mm (3")	100 mm (4")
	Connection Thread	Outer Pipe Thread BSP or NPT	
	Total Head	27 m (88 ft)	30 m (98 ft)
	Discharge Volume	1450 L/min (383 USG/min)	2050 L/min (542 USG/min)
	Max. Suction Lift	8 m (26 ft)	
	Material for Mechanical Seal	SiC (Silicon Carbide) × SiC	
	Material for Impeller	Hi-Chrome	
ENGINE	Material for Volute	Spheroidal Graphite Iron Castings (FCD 450)	
	Type	Forced Air-Cooled 4-stroke Gasoline Engine	
	Model	Honda GX270	Honda GX390
	Displacement	270 cc	389 cc
	Rated Output	5.1 kW (6.9 PS) / 3600 rpm	7.0 kW (9.5 PS) / 3600 rpm
	Max. Output	6.0 kW (8.2 PS) / 3600 rpm	8.7 kW (11.8 PS) / 3600 rpm
	Fuel	Automotive Unleaded Gasoline	
	Fuel Tank Capacity	5.3 L (1.40 USG)	6.1 L (1.61 USG)
	Continuous Operating Time	Approx. 2 hrs	
	Starting Method	Recoil Starter	
Accessories	1 Strainer, 2 Hose Couplings, 3 Hose Bands, 1 Engine Tool Set		
Net Weight	65 kg (143.3 lbs)	79.5 kg (175.3 lbs)	
Gross Weight	73 kg (160.9 lbs)	91 kg (200.6 lbs)	
Dimensions L×W×H (mm)	730 × 530 × 600	785 × 565 × 630	
Packing Unit	1		